

# PARK PLACE BUSINESS DEVELOPMENT CENTER

KNOW ALL PERSONS BY THESE PRESENTS: That GPM Lonsdale LLC, a Minnesota limited liability company, owner of the following described property:

Outlot A, Lonsdale Business Park Second Addition, Rice County, Minnesota.

Has caused the same to be surveyed and platted as PARK PLACE BUSINESS DEVELOPMENT CENTER.

In witness whereof said GPM Lonsdale LLC, a Minnesota limited liability company, has caused these presents to be signed by its proper officer this 19 day of April, 2022.

Signed: GPM-Lonsdale LLC  
Martin E. Klehm, Chief Manager

STATE OF MINNESOTA  
COUNTY OF Dakota

This instrument was acknowledged before me on April 19, 2022, by Martin E. Klehm, Chief Manager of GPM Lonsdale LLC, a Minnesota limited liability company.

Julie Sundahl  
Signature  
Printed Julie Sundahl  
Notary Public, Dakota County, Minnesota  
My Commission expires January 31, 2023

### SURVEYORS CERTIFICATE

I Grant D. Jacobson do hereby certify that this plat was prepared by me or under my direct supervision; that I am a duly Licensed Land Surveyor in the State of Minnesota; that this plat is a correct representation of the boundary survey; that all mathematical data and labels are correctly designated on this plat; that all monuments depicted on this plat have been, or will be correctly set within one year; that all water boundaries and wet lands, as defined in Minnesota Statutes, Section 505.01, Subd. 3, as of the date of this certificate are shown and labeled on this plat; and all public ways are shown and labeled on this plat.

Dated this 19 day of April, 2022.

Grant D. Jacobson  
Grant D. Jacobson, Licensed Land Surveyor  
Minnesota License No. 23189

STATE OF MINNESOTA  
COUNTY OF Dakota

This instrument was acknowledged before me on April 19, 2022 by Grant D. Jacobson.

Julie Sundahl  
Signature  
Printed Julie Sundahl  
Notary Public, Dakota County, Minnesota  
My Commission expires January 31, 2023

### LONSDALE PLANNING COMMISSION

Be it known that at a meeting held on this 15<sup>th</sup> day of November, 2021. The Planning Commission of the City of Lonsdale did hereby review and/or approve this plat of PARK PLACE BUSINESS DEVELOPMENT CENTER.

By Capit T. Faldut Chairperson  
Attest Ben Bangor Secretary

### CITY COUNCIL, CITY OF LONSDALE, MINNESOTA

This plat of PARK PLACE BUSINESS DEVELOPMENT CENTER, was approved and accepted by the City Council of the City of Lonsdale, Minnesota, at a regular meeting thereof held this 8<sup>th</sup> day of November, 2021, and said plat is in compliance with the provisions of Minnesota Statutes, Section 505.03, Subd. 2.

By [Signature] Mayor  
Attest [Signature] City Administrator

### RICE COUNTY SURVEYOR

I hereby certify that in accordance with Minnesota Statutes, 505.021, Subd 11, this plat has been reviewed and approved this 22nd day of April, 2022.

Michael Fangman  
Michael Fangman, Rice County Surveyor

### RICE COUNTY PROPERTY TAX & ELECTIONS

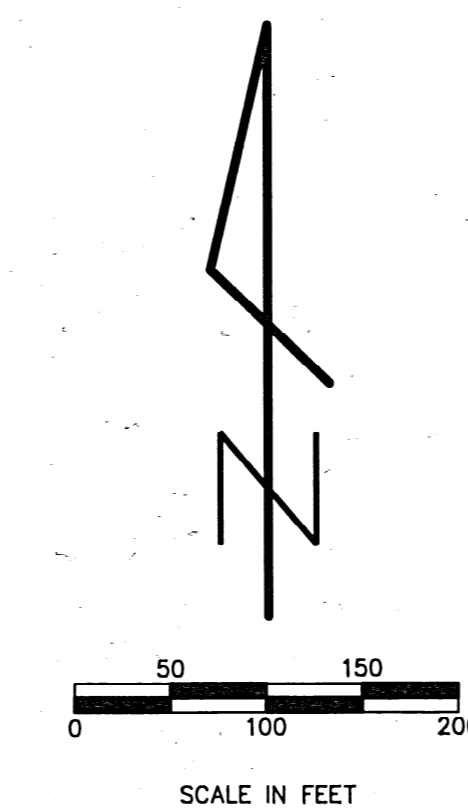
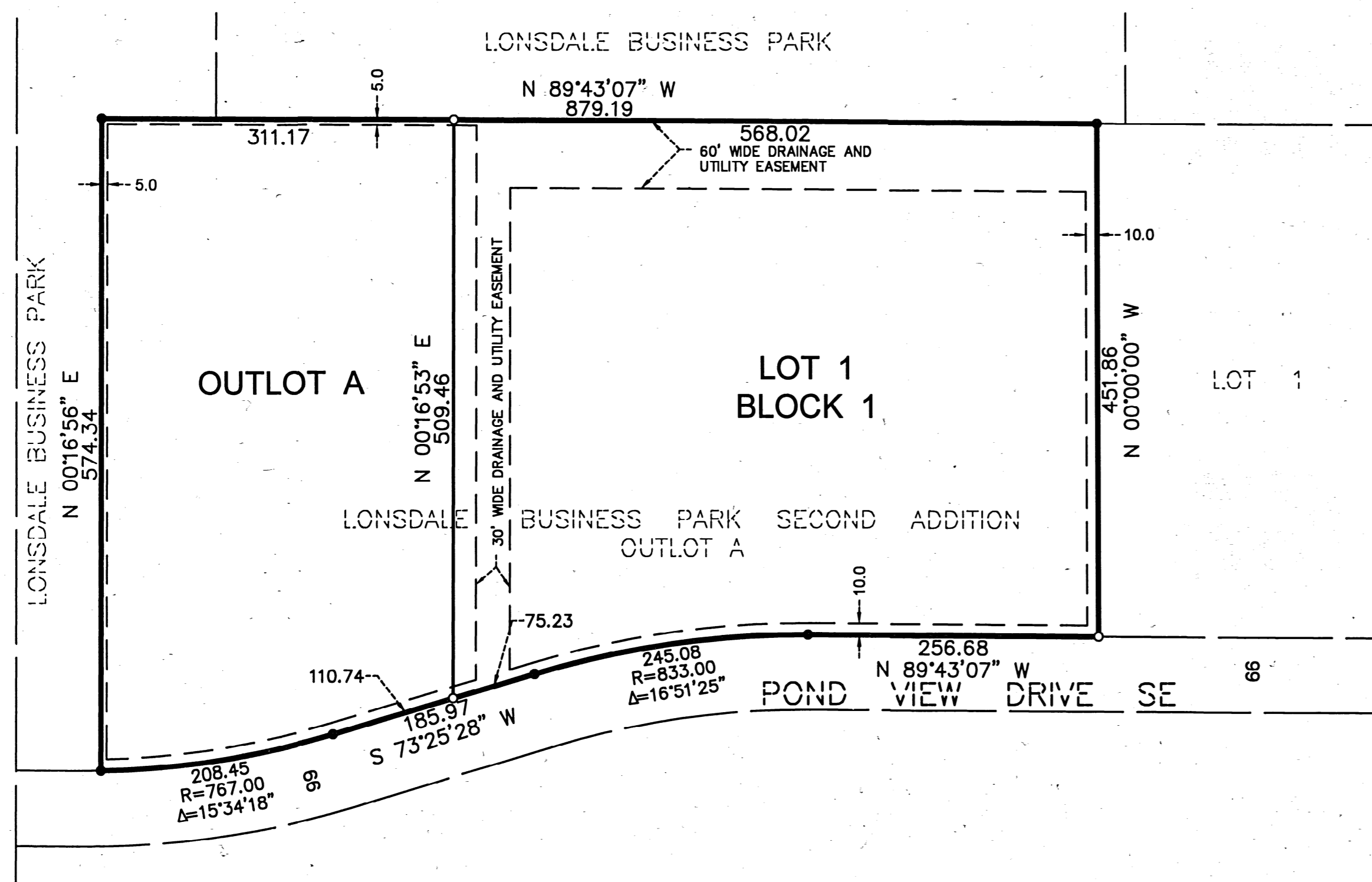
Pursuant to Minnesota Statutes, Section 505.021, Subd. 9, taxes payable in the year 2022 on the land hereinbefore described have been paid. Also, pursuant to Minnesota Statutes, Section 272.12, there are no delinquent taxes and transfer entered this 25<sup>th</sup> day of April, 2022.

Denise Anderson  
Denise Anderson, Property Tax & Elections Director

### RICE COUNTY RECORDER

County Recorder, County of Rice, State of Minnesota  
I hereby certify that this plat of PARK PLACE BUSINESS DEVELOPMENT CENTER was filed in this office of the County Recorder for public record on this 25<sup>th</sup> day of April, 2022, at 12:50 o'clock P.M. and was duly filed as Document No. 751006.

Michael Fangman  
Michael Fangman, Rice County Recorder

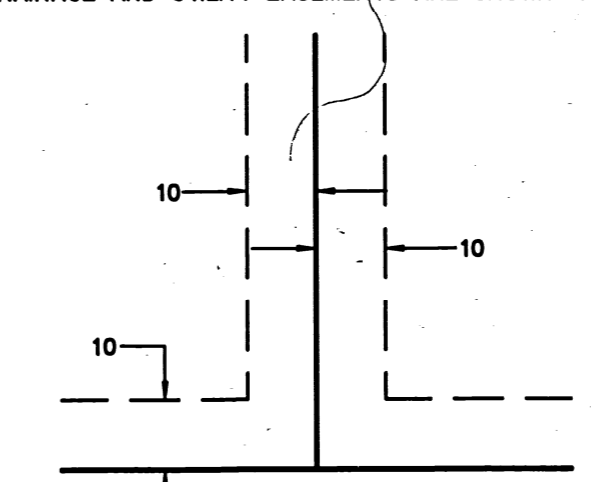


THE NORTH LINE OF OUTLOT A, LONSDALE BUSINESS PARK SECOND ADDITION IS ASSUMED TO HAVE A BEARING OF S 89°43'07" E

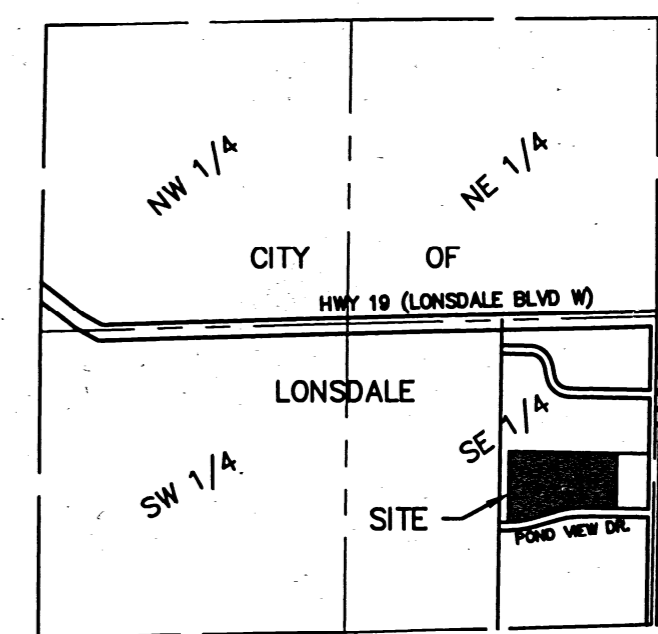
- DENOTES 1/2 INCH X 14 INCH IRON MONUMENT SET, MARKED BY MINNESOTA LICENSE NO. 23189
- DENOTES IRON PIPE MONUMENT FOUND AS SHOWN

DRAINAGE AND UTILITY EASEMENTS SHOWN ARE EXISTING PER THE RECORDED PLAT OF LONSDALE BUSINESS PARK

DRAINAGE AND UTILITY EASEMENTS ARE SHOWN THUS:



VICINITY MAP  
NO SCALE



SEC. 25-T112N-R22W  
RICE COUNTY, MINNESOTA