



AQUA-RESLIN®

FOR USE ONLY BY FEDERAL, STATE, TRIBAL OR LOCAL GOVERNMENT OFFICIALS RESPONSIBLE FOR PUBLIC HEALTH OR VECTOR CONTROL, OR BY PERSONS CERTIFIED IN THE APPROPRIATE CATEGORY OR OTHERWISE AUTHORIZED BY THE STATE OR TRIBAL LEAD PESTICIDE REGULATORY AGENCY TO PERFORM ADULT MOSQUITO CONTROL APPLICATIONS, OR BY PERSONS UNDER THEIR DIRECT SUPERVISION

- A Synergized Permethrin Formulation
- For Effective Adult Mosquito (Including organophosphate resistant species), Midge (biting and non-biting) and Blackfly Control
- For use as a Space Spray by Air and Ground Application to Control Adult Mosquitoes
- Uses Water as a Diluent
- Fast and Effective Control of Adult Mosquitoes
- Provides Quick Knockdown and Effective Control of Mosquitoes, Black Flies, Gnats, Biting and Non-Biting Midges as well as other Biting Flies
- For Aerial or Ground Application
- For Barrier / Surface Application
- A FFAST™ Formulation
- May be Applied Undiluted or Diluted in Water.
- ULV application provides excellent control at Rates Up to 0.007 Pounds Permethrin Per Acre.

ACTIVE INGREDIENTS:

| | |
|-----------------------------------|-------|
| Permethrin | 20.0% |
| Piperonyl Butoxide..... | 20.0% |
| OTHER INGREDIENTS:** | 60.0% |

TOTAL: 100.0%

*(butylcarbityl)(6-propylpiperonyl)ether and related compounds

**Contains Petroleum Distillates

Contains 1.67 pounds of permethrin and 1.67 pounds of piperonyl butoxide per gallon

EPA Reg. No. 101563-7

PRECAUCION AL CONSUMIDOR: Si usted no lee ingles, no use este producto hasta que la etiqueta le haya sido explicada ampliamente.

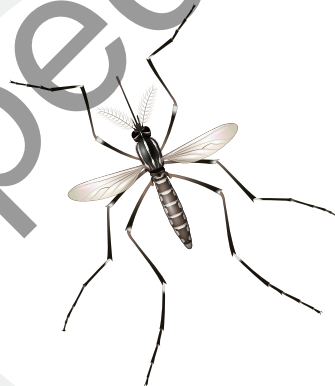
(TO THE USER: If you can not read English, do not use this product until the label has been fully explained to you.)

**KEEP OUT OF REACH
OF CHILDREN
CAUTION**

See Side Panel For Additional
Precautionary Statements



Adult Mosquitoes



For **MEDICAL** and **TRANSPORTATION** Emergencies **ONLY** Call 24 Hours A Day 1-800-424-9300

For **PRODUCT USE** Information Call 1-800-331-2867

| FIRST AID | |
|--|---|
| If swallowed: | <ul style="list-style-type: none"> • Immediately call a poison control center or doctor. • Do not induce vomiting unless told to do so by the poison control center or doctor. • Do not give any liquid to the person. • Do not give anything by mouth to an unconscious person. |
| If in eyes: | <ul style="list-style-type: none"> • Hold eyelid open and rinse slowly and gently with water for 15-20 minutes. • Remove contact lenses, if present, after the first 5 minutes, then continue rinsing eye. • Call a poison control center or doctor for immediate treatment advice. |
| Have the product container or label with you when calling a poison control center or doctor, or going for treatment. In case of Medical emergencies or health and safety inquiries or in case of fire, leaking or damaged containers, information may be obtained by calling 1-800-424-9300. | |
| Note to Physician: Contains petroleum distillates. May pose an aspiration pneumonia hazard. | |

PRECAUTIONARY STATEMENTS

HAZARDS TO HUMANS AND DOMESTIC ANIMALS

CAUTION

Harmful if swallowed. Wash thoroughly with soap and water after handling.

PERSONAL PROTECTIVE EQUIPMENT (PPE)

Some materials that are chemical-resistant to this product are made of barrier laminate, nitrile rubber greater or equal to 14 mils or neoprene rubber greater or equal to 14 mils. If you want more options, follow the instructions for category E on an EPA chemical-resistance category selection chart.

Mixers, loaders, applicators and other handlers must wear:

Long-sleeved shirt and long pants,

Shoes plus socks,

Chemical-resistant gloves for all handlers except for applicators using motorized ground equipment, pilots, and flaggers, Chemical-resistant apron for mixers/loaders, persons cleaning equipment, and persons exposed to the concentrate.

Follow manufacturer's instructions for cleaning / maintaining PPE. If no such instructions for washables exist, use detergent and hot water. Keep and wash PPE separately from other laundry.

Discard clothing and other absorbent materials that have been drenched or heavily contaminated with this product's concentrate. Do not reuse them.

See engineering controls for additional requirements.

USER SAFETY RECOMMENDATIONS

Users should wash hands before eating, drinking, chewing gum, using tobacco or using the toilet.

Users should remove clothing/PPE immediately if pesticide gets inside. Then wash thoroughly and put on clean clothing.

Users should remove PPE immediately after handling this product. Wash the outside of gloves before removing. As soon as possible, wash thoroughly and change into clean clothing.

ENGINEERING CONTROLS

Pilots must use an enclosed cockpit that meet the requirements listed in the Worker Protection Standard (WPS) for agricultural pesticides [40 CFR 170.24(d)(6)].

Human flagging is prohibited. Flagging to support aerial application is limited to use of the Global Positioning System (GPS) or mechanical flaggers.

ENVIRONMENTAL HAZARDS

This pesticide is extremely toxic to aquatic organisms, including fish and invertebrates. Runoff from treated areas or deposition of spray droplets into a body of water may be hazardous to fish and aquatic invertebrates.

Before making the first application in a season, it is advisable to consult with the state or tribal agency with primary responsibility for pesticide regulation to determine if other regulatory requirements exist.

Do not apply over bodies of water (lakes, rivers, permanent streams, natural ponds, commercial fish ponds, swamps, marshes, or estuaries), except when necessary to target areas where adult mosquitoes are present, and weather conditions will facilitate movement of applied material away from the water in order to minimize incidental deposition into the water body. Do not contaminate water when disposing of equipment rinsate or wash waters.

This pesticide is highly toxic to bees exposed to direct treatment on blooming crops or weeds. Do not apply this product or allow drift when bees are actively visiting the treatment area, except when applications are made to prevent or control a threat to public and / or animal health determined by a state, tribal or local health or vector control agency on the basis of documented evidence of disease causing agents in vector mosquitoes, or the occurrence of mosquito-borne disease in animal or human populations, or if specifically approved by the state or tribe during a natural disaster recovery effort. Applications should be timed to provide the maximum possible interval between treatment and the next period of bee activity.

DIRECTIONS FOR USE

It is a violation of Federal Law to use this product in a manner inconsistent with its labeling.

READ ENTIRE LABEL FOR DIRECTIONS

SHAKE OR AGITATE THOROUGHLY BEFORE DILUTING: Diluted product must be thoroughly agitated before use. Avoid prolonged storage of excess formulation in equipment.

NOTICE: This concentrate is for dilution with water only; it can not be diluted in oil.

(continued from front label)

FOR USE ONLY BY FEDERAL, STATE, TRIBAL, OR LOCAL GOVERNMENT OFFICIALS RESPONSIBLE FOR PUBLIC HEALTH OR VECTOR CONTROL, OR BY PERSONS CERTIFIED IN THE APPROPRIATE CATEGORY, OR OTHERWISE AUTHORIZED BY THE STATE OR TRIBAL LEAD PESTICIDE REGULATORY AGENCY TO PERFORM ADULT MOSQUITO CONTROL APPLICATIONS, OR BY PERSONS UNDER THEIR DIRECT SUPERVISION.

APPLICATION INSTRUCTIONS

Apply at a rate not to exceed 0.007 pounds of permethrin per acre in any given 24 hour period. Do not retreat a site more than once in 3 days. Do not exceed 25 applications at 0.007 pounds of permethrin per acre (not to exceed a total of 0.18 pounds of permethrin per acre) in any given season. More frequent applications may be made to prevent or control a threat to public and/or animal health determined by a state, tribal or local health or vector control agency on the basis of documented evidence of disease causing agents in vector mosquitoes or the occurrence of mosquito-borne disease in animal or human populations, or if specifically approved by the state or tribe during a natural disaster recovery effort.

Do not make applications during rain. Not for use in metered release systems.

Not for use in outdoor residential misting systems.

AQUA-RESLIN is approved for application as an Ultra-Low Volume (ULV) aerosol to control adult mosquitoes and flies in residential, industrial, urban, recreational, and other areas where adult mosquitoes and flies are found. The formulation greatly reduces the evaporation rate of water from the droplets and allows the water-based spray cloud to behave as that produced by a typical oil-based formulation. AQUA-RESLIN is also approved for application with mist-blowers, backpack sprayers, handheld sprayers, and low pressure hand sprayers for barrier or surface applications. AQUA-RESLIN is used for control of annoyance flies and mosquitoes, mosquitoes and flies of public health or disease vector importance in areas such as but not limited to residential areas, industrial areas, urban areas, parks, campsites, woodlands, athletic fields, golf courses, playgrounds, recreational and overgrown waste areas, roadsides, and other areas where adult mosquitoes and flies occur. Apply at a rate not to exceed 0.007 pounds of permethrin per acre in any given 24 hour period. Do not retreat site more than once in 3 days. Do not exceed 25 applications at 0.007 pounds of permethrin per acre (not to exceed a total of 0.18 pounds of permethrin per acre) in any given season. More frequent applications may be made to prevent or control a threat to public and/or animal health determined by a state, tribal or local health or vector control agency on the basis of documented evidence of disease causing agents in vector mosquitoes or the occurrence of mosquito-borne disease in animal or human populations, or if specifically approved by the state or tribe during a natural disaster recovery effort.

This product can be applied to the air column over specific growing crops prior to harvest and range grasses for the control of adult mosquitoes and biting flies within or adjacent to these areas. Application can be made where the following crops are present:

Alfalfa, Almonds, Apples, Artichoke, Asparagus, Avocado, Broccoli, Brussel sprouts, Cabbage, Cantaloupe, Cauliflower, Celery, Cherry, Corn (field and pop), Corn (sweet), Eggplant, Filberts (Hazelnuts), Garlic, Horseradish, Lettuce, Onions (dry bulb only), Papayas (FL only), Peaches (Nectarines, Pears, Bell peppers, Pistachios, Potatoes, Soybeans, Spinach, Tomatoes, and Walnuts.

Cucurbit vegetables, including: Chayote (fruit), Chinese waxgourd (Chinese preserving melon), Citron melon, Cuban pumpkin, Cucumber, Gherkin, Gourd (edible, includes hyotan, cucuzza, hechima, Chinese okra), *Momordica* spp. (includes balsam apple, balsam pear, bitter melon, Chinese cucumber), Muskmelon (hybrids and/or cultivars of Cucumis melo including true cantaloupe, cantaloupe, casaba, Crenshaw melon, golden pershaw melon, honeydew melon, honey balls, mango melon, Persian melon, pineapple melon, Santa Claus melon, snake melon and Winter melon), Pumpkin, Squash (includes Summer squash types such as: butternut squash, calabaza, crookneck squash, Hubbard squash, scallop squash, straightneck squash, vegetable marrow and zucchini, and winter squash types such as acorn squash and spaghetti squash), Watermelon (includes hybrids and/or varieties of Citrullus lanatus).

Leafy Vegetables, including: Leafy vegetables (except brassica); Amaranth (leafy amaranth, Chinese spinach, tampala), Arugula (Rocket), Chervil, Chrysanthemum (edible leaved and garland), Corn salad, Cress (garden), Cress (upland, yellow rocket, winter cress), Dandelion, Dock (sorrel), Endive (escarole), Lettuce (head and leaf), Orach, Parsley, Purslane (garden and winter), Radicchio (red chicory), Spinach (including New Zealand and vine (Malabar spinach, Indian spinach)).

In the treatment of corrals, feed lots, swine lots, poultry ranges, and zoos cover any exposed drinking water, drinking fountains and animal feed before application.

AQUA-RESLIN provides effective control of adult mosquitoes, black flies, gnats, biting and non-biting midges, stable flies, horse flies, deer flies, sheep flies, horn flies, and nuisance flying insects such as houseflies.

Spray Droplet Size Determination Ground Equipment:

Spray equipment must be adjusted so that the volume median diameter is less than 30 microns (D_v 0.5 < 30 µm) and that 90% of the spray is contained in droplets smaller than 50 microns (D_v 0.9 < 50µm). Directions from the equipment manufacturer or vendor, pesticide registrant, or a

test facility using a laser-based measurement instrument must be used to adjust equipment to produce acceptable droplet size spectra. Application equipment must be tested at least annually to confirm that pressure at the nozzle and nozzle flow rate(s) are properly calibrated.

Aerial Application made at ≤ 200 feet above ground elevation:

Spray equipment must be adjusted so that the volume median diameter produced is less than 60 microns (D_v 0.5 < 60 µm) and that 90% of the spray is contained in droplets smaller than 100 microns (D_v 0.9 < 100 µm). The effects of flight speed and, for non-rotary nozzles, nozzle angle on the droplet size spectrum must be considered. Directions from the equipment manufacturer or vendor, pesticide registrant, or a test facility using a wind tunnel and laser-based measurement instrument must be used to adjust equipment to produce acceptable droplet size spectra. Application equipment must be tested at least annually to confirm that pressure at the nozzle and nozzle flow rate(s) are properly calibrated. Apply when wind speed is equal to or greater than 1 mph.

Aerial Application made at >200 feet above ground elevation:

Spray equipment must be adjusted so that the volume median diameter produced is less than 70 microns (D_v 0.5 < 70 µm) and that 90% of the spray is contained in droplets smaller than 145 microns (D_v 0.9 < 145 µm). The effects of flight speed and, for non-rotary nozzles, nozzle angle on the droplet size spectrum must be considered. Directions from the equipment manufacturer or vendor, pesticide registrant, or a test facility using a wind tunnel and laser-based measurement instrument must be used to adjust equipment to produce acceptable droplet size spectra. Application equipment must be tested at least annually to confirm that pressure at the nozzle and nozzle flow rate(s) are properly calibrated. All types of applications should be conducted at temperatures above 50°F. Apply when wind speeds are equal to or greater than 1 mph.

GROUND APPLICATION

Vehicle-Mounted ULV Cold Aerosol Generators or Vehicle-Mounted Non-Thermal Aerosol (Cold Fog): Apply through non-thermal ULV application equipment and base acreage calculations on the equipment manufacturer's recommended swath width. Apply at a rate not to exceed 0.007 pounds of permethrin per acre in any given 24 hour period. An optimum swath is created when AQUA-RESLIN is applied from a truck that is being driven perpendicular to the wind direction. Direct the spray head of equipment to ensure even distribution of the spray cloud throughout the area. For best results, apply when insects are most active and meteorological conditions are conducive to keeping the spray cloud in the air column close to the ground. An inversion of air temperatures and a light breeze is preferable. Do not exceed 25 applications at 0.007 pounds of permethrin per acre (not to exceed a total of 0.18 pounds of permethrin per acre) in any given season. More frequent applications may be made to prevent or control a threat to public and/or animal health determined by a state, tribal, or local health or vector control agency on the basis of documented evidence of disease causing agents in vector mosquitoes or the occurrence of mosquito-borne disease in animal or human populations, or if specifically approved by the state or tribe during a natural disaster recovery effort. Application during the cooler hours of the night or early morning is recommended. Apply when wind speed is equal to or greater than 1 mph.

AQUA-RESLIN may be applied through ULV Cold Aerosol Generators, or other equipment designed for non-thermal ULV aerosol applications. The desired application rate may be obtained under different conditions by altering the dilution rate of AQUA-RESLIN, the flow rate of the insecticide from the application equipment and the vehicle speed. Examples are given in the following table:

Flow Rate (Fluid Ounces Per Minute)

| Application Rate (lb permethrin/Acre) | Vehicle Speed (MPH) | Undiluted | Diluted 1 + 1 | Diluted 1 + 2 | Diluted 1 + 4.5 | Diluted 1 + 9 |
|---------------------------------------|---------------------|-----------|---------------|---------------|-----------------|---------------|
| 0.0015 | 10 | 0.70 | 1.40 | 2.10 | 3.8 | 7.0 |
| | 15 | 1.05 | 2.10 | 3.10 | 5.7 | 10.5 |
| | 20 | 1.40 | 2.80 | 4.20 | 7.6 | 14.0 |
| 0.0035 | 10 | 1.63 | 3.25 | 4.90 | 8.9 | 16.3 |
| | 15 | 2.45 | 4.90 | 7.30 | 13.4 | 24.4 |
| | 20 | 3.25 | 6.50 | 9.80 | 17.9 | 32.6 |
| 0.007 | 10 | 3.25 | 6.50 | 9.80 | 17.9 | |
| | 15 | 4.89 | 9.70 | 14.60 | 26.5 | |
| | 20 | 6.53 | 12.90 | 19.50 | 35.4 | |

Where dense vegetation is present, the use of higher rates and/or slower speeds is recommended.

BACKPACK SPRAYER ULV APPLICATION: Apply through non-thermal ULV application equipment and base acreage calculations on a 50 foot swath. Dilute AQUA-RESLIN with water and apply at the rate of 8 ounces of finished spray per acre (based on a 50 foot swath, 8 ounces should be applied while walking 870 feet). To apply 0.0035 pounds of permethrin per acre, dilute 1 part AQUA-RESLIN with 31 parts water and apply at the rate listed above. To apply 0.007 pounds of permethrin per acre, dilute 1 part AQUA-RESLIN with 15 parts of water and apply at the rate listed above.

URBAN ULV MOSQUITO CONTROL APPLICATIONS: For control of resting or flying adult mosquitoes, biting flies, and biting midges in areas such as utility tunnels, sewers, storm drains and catch basins, pipe chases, underground basements, underground passages, parking decks, crawl spaces, or uninhabited buildings. AQUA-RESLIN may be applied

using mechanical foggers, hand-held or truck-mounted ULV equipment, thermal foggers, or other spray equipment suitable for this application. Apply AQUA-RESLIN at rates up to but not exceeding 0.007 pounds permethrin per acre.

AERIAL APPLICATION

AQUA-RESLIN may be applied either diluted or undiluted at rates of 0.0035 to 0.007 pounds permethrin per acre by fixed wing or rotary aircraft that are capable of making a ULV application. Do not apply by fixed wing aircraft at a height less than 100 feet, or by helicopter at a height less than 75 feet. Do not exceed 25 applications at 0.007 pounds of permethrin per acre (not to exceed 0.18 pounds of permethrin per acre) in any given season. More frequent applications may be made to prevent or control a threat to public and/or animal health determined by a state, tribal or local health or vector control agency on the basis of documented evidence of disease causing agents in vector mosquitoes or the occurrence of mosquito-borne disease in animal or human populations, or if specifically approved by the state or tribe during a natural disaster recovery effort.

For best results, treat when insects are most active and meteorological conditions are conducive to keeping the spray cloud in the air column close to the ground. In order to compensate for windy conditions and ensure drift onto the target area, aerial application with aircraft equipped with Global Positioning Systems (GPS) is recommended.

BARRIER APPLICATIONS: For control and exclusion of resting or flying adult mosquitoes in areas such as animal quarters, roadsides, urban areas, residential areas, industrial areas, golf courses, parks, recreational areas, tire piles, and all public areas where adult mosquitoes may occur. May be used to treat aggregation and harborage areas such as the perimeter of residential buildings, storage buildings, empty rail cars, truck transport trailers, abandoned buildings, and other areas where adult mosquitoes find harborage. For application to resting or aggregation surfaces using low pressure hand sprayers or other similar equipment which has demonstrated the capacity to deliver an even distribution of the labeled rate over the desired treatment area, mix 2.8 oz in one gallon of water and apply sufficient spray to dampen surface, approximately 700 - 750 square feet of treated area. For application using backpack mist blower equipment, apply undiluted product at a rate not to exceed 7.7 oz per acre or diluted at a rate not to exceed 0.1 lbs ai per acre. Direct spray onto foliage at the perimeter of areas from which mosquitoes or flies are to be excluded or direct spray into harborage areas or resting areas where adult mosquitoes or flies may be found. When this product is applied as a barrier application using low pressure hand sprayers, or hydraulic sprayers, do not apply within 100 feet (30 meters) of lakes and streams.

All outdoor applications must be limited to spot or crack and crevice treatments only, except for the following permitted uses:

- Treatment to soil or vegetation around structures;
- Application to lawns, turfs, and other vegetation; and
- Applications to building foundations, up to a maximum height of 3 feet.

Other than applications to building foundations, all outdoor applications to impervious surfaces such as sidewalks, driveways, patios, porches, and structural surfaces (such as windows, doors, and eaves) are limited to spot and crack and crevice applications, only.

IN NEW YORK: THIS PRODUCT IS NOT REGISTERED FOR USE IN THE STATE OF NEW YORK. THE STATE OF NEW YORK PROHIBITS DISTRIBUTION, SALE OR USE IN THE STATE OF NEW YORK.

IN FLORIDA: Do not apply by aircraft unless approved by the Florida Department of Agriculture & Consumer Services.

STORAGE AND DISPOSAL

Do not contaminate water, food, or feed by storage or disposal. PESTICIDE STORAGE AND SPILL PROCEDURES: Store upright at room temperature. Avoid exposure to extreme temperatures. In case of spill or leakage, soak up with an absorbent material such as sand, sawdust, earth, fuller's earth, etc. Dispose of with chemical waste.

Pesticide Disposal: Wastes resulting from the use of this product may be disposed of on site or at an approved waste disposal facility.

Container Handling:

Rigid, Non-refillable containers small enough to shake (i.e., with capacities equal to or less than 5 gallons).

Non-refillable container. Do not reuse or refill this container. Offer for recycling, if available. Triple rinse or pressure rinse container (or equivalent) promptly after emptying. Triple rinse as follows: Empty the remaining contents into application equipment or a mix tank and drain for 10 seconds after the flow begins to drip. Fill the container 1/4 full with water and recap. Shake for 10 seconds. Pour rinsate into application equipment or a mix tank or store rinsate for later use or disposal. Drain for 10 seconds after the flow begins to drip. Repeat this procedure two more times. Then offer for recycling or reconditioning or puncture and dispose of in a sanitary landfill or incineration, or if allowed by State and Local authorities, by burning. If burned, stay out of smoke.

Rigid Non-refillable containers that are too large to shake (i.e., with capacities greater than 5 gallons or 50 lbs)

Non-refillable container. Do not reuse or refill this container. Offer for recycling, if available. Triple rinse or pressure rinse container (or equivalent) promptly after emptying. Triple rinse as follows: Empty the remaining contents into application equipment or a

(continued)

STORAGE AND DISPOSAL (continued)

mix tank. Fill the container ¼ full with water. Replace and tighten closures. Tip container on its side and roll it back and forth, ensuring at least one complete revolution, for 30 seconds. Stand the container on its end and tip it back and forth several times. Empty the rinsate into application equipment or a mix tank or store rinsate for later use or disposal. Repeat this procedure two more times. Then offer for recycling or reconditioning or puncture and dispose of in a sanitary landfill or incineration, or if allowed by State and Local authorities, by burning. If burned, stay out of smoke.

Refillable container. Refill this container with pesticide only. Do not reuse this container for any other purpose. Cleaning the container before final disposal is the responsibility of the person disposing of the container. Cleaning before refilling is the responsibility of the refiller. To clean the container before final disposal, empty the remaining contents from this container into application equipment or mix tank. Fill the container about 10 percent full with water. Agitate vigorously or recirculate water with the pump for 2 minutes. Pour or pump rinsate into application equipment or rinsate collection system. Repeat this rinsing procedure two more times. Then offer for recycling or reconditioning or puncture and dispose of in a sanitary landfill or incineration, or if allowed by State and Local authorities, by burning. If burned, stay out of smoke.

IMPORTANT: READ BEFORE USE

Read the entire Directions for Use, Conditions, Disclaimer of Warranties and Limitations of Liability before using this product. If terms are not acceptable, return the unopened product container at once.

By using this product, user or buyer accepts the following Conditions, Disclaimer of Warranties and Limitations of Liability.

CONDITIONS: The directions for use of this product are believed to be adequate and must be followed carefully. However, it is impossible to eliminate all risks associated with the use of this product. Crop injury, ineffectiveness or other unintended consequences may result because of such factors as weather conditions, presence of other materials, or the manner of use or application, all of which are beyond the control of Environmental Science U.S., LLC. All such risks shall be assumed by the user or buyer.

DISCLAIMER OF WARRANTIES: TO THE EXTENT CONSISTENT WITH APPLICABLE LAW, ENVIRONMENTAL SCIENCE U.S., LLC MAKES NO OTHER WARRANTIES, EXPRESS OR IMPLIED, OF MERCHANTABILITY OR OF FITNESS FOR A PARTICULAR PURPOSE OR OTHERWISE, THAT EXTEND BEYOND THE STATEMENTS MADE ON THIS LABEL. No agent of Environmental Science U.S., LLC is authorized to make any warranties beyond those contained herein or to modify the warranties contained herein. TO THE EXTENT CONSISTENT WITH APPLICABLE LAW, ENVIRONMENTAL SCIENCE U.S., LLC DISCLAIMS ANY LIABILITY WHATSOEVER FOR SPECIAL, INCIDENTAL OR CONSEQUENTIAL DAMAGES RESULTING FROM THE USE OR HANDLING OF THIS PRODUCT.

LIMITATIONS OF LIABILITY: TO THE EXTENT CONSISTENT WITH APPLICABLE LAW, THE EXCLUSIVE REMEDY OF THE USER OR BUYER FOR ANY AND ALL LOSSES, INJURIES OR DAMAGES RESULTING FROM THE USE OR HANDLING OF THIS PRODUCT, WHETHER IN CONTRACT, WARRANTY, TORT, NEGLIGENCE, STRICT LIABILITY OR OTHERWISE, SHALL NOT EXCEED THE PURCHASE PRICE PAID, OR AT ENVIRONMENTAL SCIENCE U.S., LLC'S ELECTION, THE REPLACEMENT OF PRODUCT.

Envu and the Envu logo are trademarks, AQUA-RESLIN® and FFAST™ are registered trademark owned by Environmental Science U.S., LLC or one of its affiliates.

